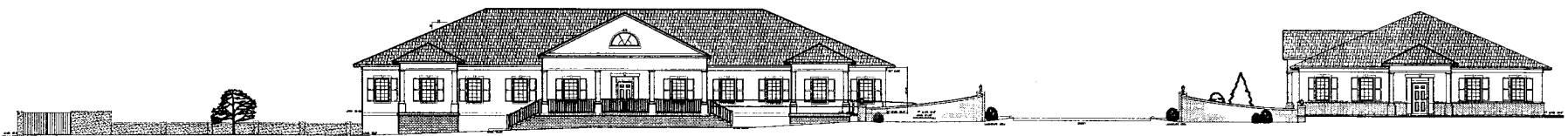


ENTRY ELEVATION



ENTRY ELEVATION

DRAWING ISSUE
 PRELIMINARY
 21 NOV. 2008
 ISSUED FOR PERMIT

REVISED:
 CONSULTANT

CONTRACTOR

David P. King, Jr
 ARCHITECT

7100 SW 516 Ave
 Suite 470
 Ocala, FL 34476
 VOICE 352.893.3737
 FACSIMILE 873.0737

REGISTRATIONS:
 STATE OF FLORIDA AR 12,990
 STATE OF GEORGIA 3084
 DRAWN BY: JDB

CHECKED BY:
 APPROVED BY:

ARCHITECT'S PROJECT No.:
 ROLLING OAKS 08-7103

PROJECT
 ROLLING OAKS
 PROFESSIONAL
 PARK
 FOR

SHEET TITLE:

SITE ELEVATION

A1.1